

CROWLEY®



<u>Name</u>	<u>IMO Number</u>	<u>Year Built</u>
Legacy/750-1	9583249	2011
Legend/750-2	9601792	2012
Liberty/750-3	9601821	2012

## 750 CLASS ARTICULATED TUG BARGE FLEET (ATB)

The newest of Crowley's ATBs, these 750 class vessels have the largest carrying capacity and contain features that are redefining the ATB industry.

### 750 Class Design Highlights:

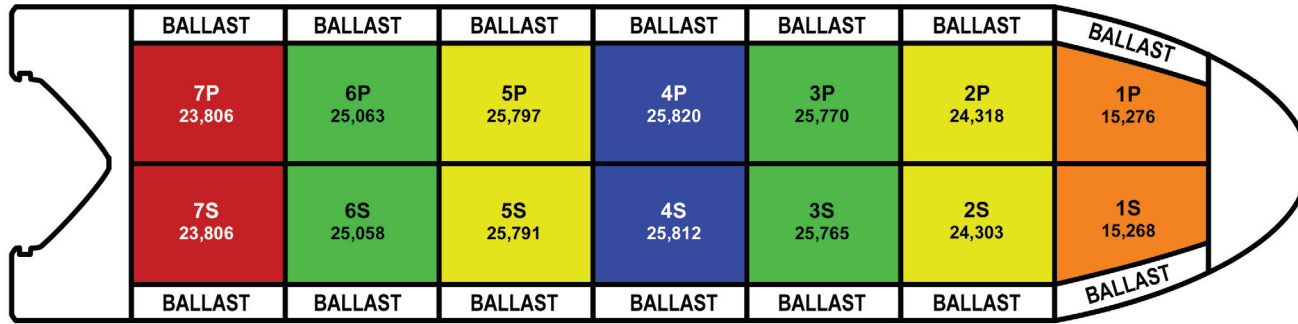
- 332,000 barrels at 98% capacity
- Twin-screw 16,000 HP tug with Intercon notch connections
- Designed to carry petroleum products, heated cargoes and EZ chemicals
- Barge built under ABS SafeHull program
- Meets full SOLAS criteria for enhanced crew safety
- Redundant steering system with oversized rudders for maximum handling capabilities
- Transfer rates of up to 30,000 barrels per hour
- Cargo pump in each of the 14 cargo tanks to assure maximum cargo integrity and segregation flexibility
- Remote radar gauging in all cargo and ballast tanks
- Remote operated ballast system to enable the vessel to exchange ballast at sea while underway
- Two hose-handling cranes with 10-ton safe working load
- Enhanced mooring system featuring 1,000 feet of Spectra-type lines on split drums with a high-speed recovery rate of 100 feet per minute
- Two anchor windlasses each equipped with 10 shots of chain for offshore mooring operation
- Barge meets OCIMF and ISCOTT requirements
- Fixed cleaning system to easily handle cargo changes
- Advanced foam firefighting system, fire monitor mounted on tug, fixed Co2 for all machinery spaces and foam coverage system for cargo manifold area

[Crowley.com/ATB](http://Crowley.com/ATB)



**CROWLEY®**

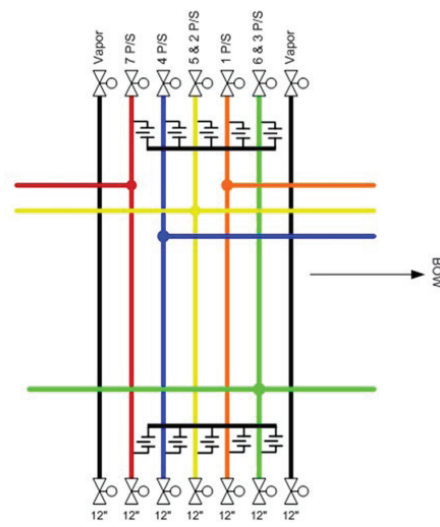
People Who Know®



**Cargo Systems (@ 98% capacity)**

1P/S	30,544 bbls
2P/S & 5P/S	100,208 bbls
3P/S & 6P/S	101,656 bbls
4P/S	51,632 bbls
7P/S	47,612 bbls

*\*Quantities are approximate based on gross bbls capacities*



**GENERAL SPECIFICATIONS**

**FLAG**

United States

**BUILDER**

Tugs - Dakota Creek Industries  
Barges - HalterMarine

**OVERALL DIMENSIONS**

LOA Coupled: 674'  
Breadth, Molded: 105'6"  
Depth: 57'  
Design Draft: 41' (750-1) & 35' (750-3/750-3)  
DWT: 48,000 LT  
Tonnage (tug): 1,567

**TANK CAPACITY**

Cargo @98%: 332,000 bbls  
MGO: 1,063

**CARGO EQUIPMENT**

Tanks: 14  
Segregations: 5  
Pumps: 14  
Capacity: 601.7 M<sup>3</sup>/HR  
Crane: 2:10 ton

**MACHINERY**

Main Engine: 2:2 CUMMINS QSK60-DM  
Emissions Standard: Tier I  
HP: 16,000  
Propeller: Controllable Pitch  
Generators: 4  
Ballast Sys.: 2 Deepwell Pump-7,142 bbls/hr  
Cleaning Sys.: ScanJet SC-30T 35m<sup>3</sup>/hr@10bar  
Heating Sys.: Vapor Power ONC-5937-AHK-120  
Lightering Pin: 60" Bore Intercontinental Engineering Pin

*\*All information contained herein (including but not limited to any specifications, particulars, capacities, or capabilities) is believed to be correct, but is not guaranteed and is subject to change without notice. Particulars are entirely without warranty as to their correctness and interested parties must inspect the vessel, its certificates and drawings accordingly.*

9487 Regency Square Blvd • Jacksonville, FL 32225 • O: +1•904•727•2200

Crowley.com/ATB



**CROWLEY®**  
People Who Know®