

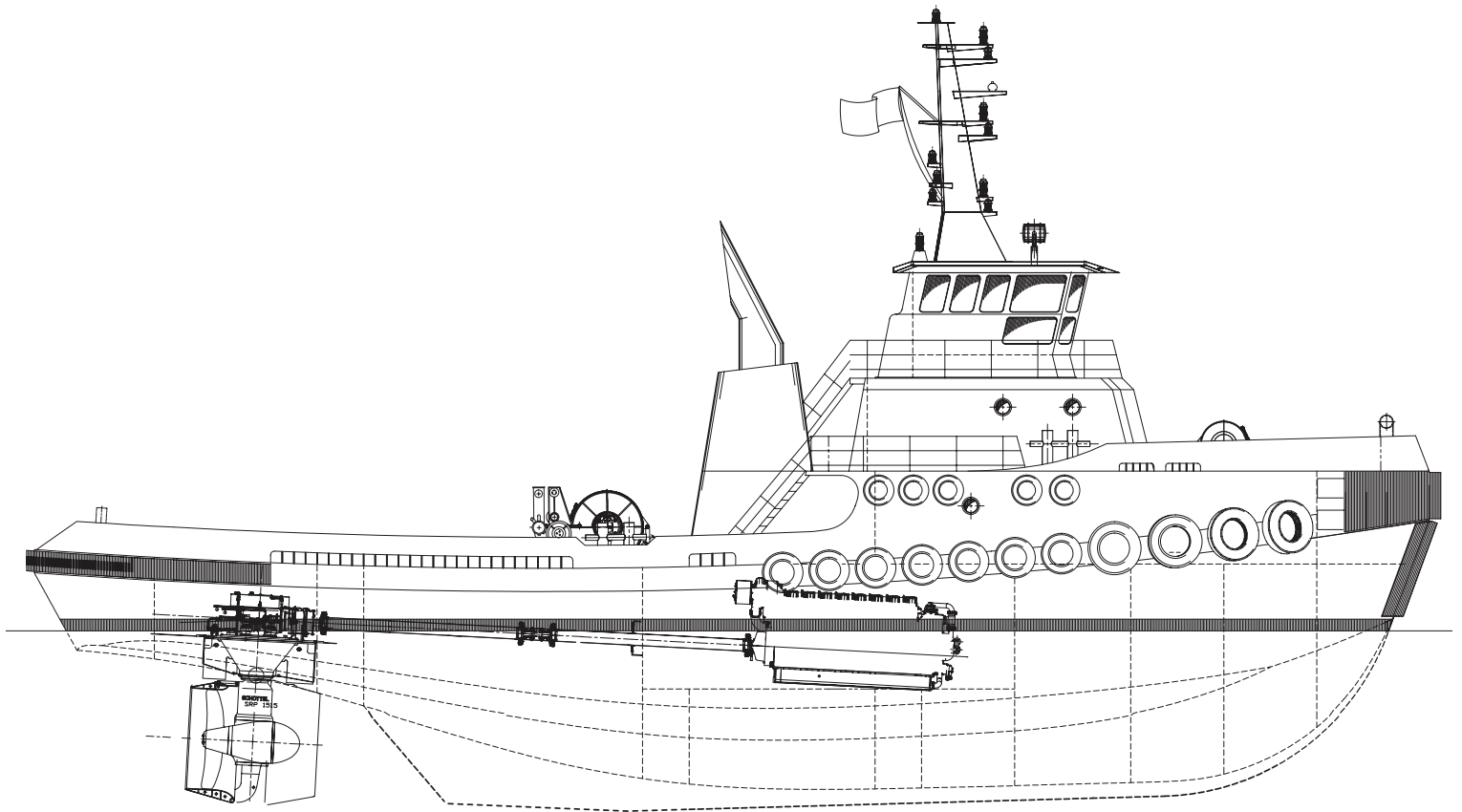


MONTANA & WASHINGTON

TITAN CLASS TUGBOATS

Crowley is pleased to introduce the Titan Class tugboats, Montana, built in 2015, and Washington, delivered in March, 2014, as part of its continued commitment to meeting the ocean towing needs of its project management customers. Designed by Crowley's Seattle-based naval architecture and marine engineering firm, the two 120' x 35' x 20' ABS machinery class oceangoing tugboats, are powered by twin GE 8L250 EPA Tier II & III engines, each rated at 2679 HP/1999 KW at 900 RPM. The ABS Maltese Cross A1, towing service, machinery-classed Montana and Washington consume significantly less fuel and enjoy much lower maintenance costs than other equivalently powered oceangoing tugboats.

Measuring 497 international tons and 91 regulatory tons, the tugs meet all requirements for unrestricted world navigation and are equipped to allow for a scalable crew. They are fitted with a pair of Schottel FP1515 Z-drive units for superior maneuverability of tows in port and in close quarters. Living spaces are acoustically-dampened and fire proofed using the NORAC and Danacoustic systems, ensuring crew comfort and safety.



Vessel Specifications

Flag Registry

United States (U.S.)

Overall Dimensions

Length120' • 36.576m
 Beam35' • 10.668m
 Depth21' • 6.4008m
 Loaded Draft . 20' • 6.096m
 Light Draft . . .17'6" • 5.334m

Tonnage

U.S. Regulatory .91
 International . . .497

Capacities

Fuel158,000 gal.
 Potable Water . .11,000 gal.

Main Propulsion

Montana
 Main . . . (2) GE 8L250 Tier 3
 Aux. . . . (2) 1185KW John Deere/
 Kohler Gensets

Washington
 Main . . . (2) GE 8L250 Tier 2
 Aux. . . . (2) 180KW John Deere
 6081A/Kohler

Horsepower

Montana 5400 HP
 Washington 5400 HP

Z-Drives Thrusters

(2) - Schottell FP1515; 2600mm
 diameter stainless steel propeller,
 outboard rotation

Continuous Bollard Pull

ABS Certified
 Montana 82.5 tons
 Washington 82.5 tons

Double Drum Tow Winch

Washington
 JonRie Series 500; 2600' x 2-1/4";
 1800' x 2" Wire; Independent
 Capstan

Montana
 Markey TESD-34; 2,400' x 2.25" and
 1,800' x 2" WIRE

Headline Winch

JonRie Series 200; 450'x7" Synthetic
 Line Reel Plus Independent Capstan

Emergency Tow Line

600' 7" Dyneema Towing Package

Accommodations/Bunks

10

Navigation Equipment

Dual Radars, VHF Radios, Satellite
 Communications, GMDSS

Builder

JT Marine Inc.

Designers

Crowley
 Crescere Maritime

Certification

ABS + A1, AMS Machinery Class,
 Towing Service, All Oceans

*All information contained herein
 (including but not limited to any
 specifications, particulars, capacities,
 or capabilities) is believed to be correct,
 but is not guaranteed and is subject to
 change without notice.*