



Name	Number	Year Built
Marty J	1193074	2006
455 3	1204668	2007
455 4	1218567	2009
455 5	1218997	2009
455 6	1220095	2009
455 7	1221895	2009
455 8	1225722	2010
455 9	1227728	2010

400' x 105' x 25' • 121.92m x 32.00m x 7.62m

# 455 SERIES

## Specifications

### Summer Load Line

Keel Draft 19' 1.1875" • 5.82m  
 Displacement 23,090ST • 20,946.90MT  
 Deadweight 19,226ST • 17,441.53MT

### Lightship

Draft (mean) 3'9" • 1.14m  
 Displacement 3,863.87ST • 3,505.24MT  
 LCG Forward of Transom 201.11' • 61.30m  
 VCG Above Baseline 202.22' • 61.64m

### Draft Mark Locations Forward of Transom

Fwd Marks 337.77' • 102.95m  
 Aft Marks 60.83' • 18.54m

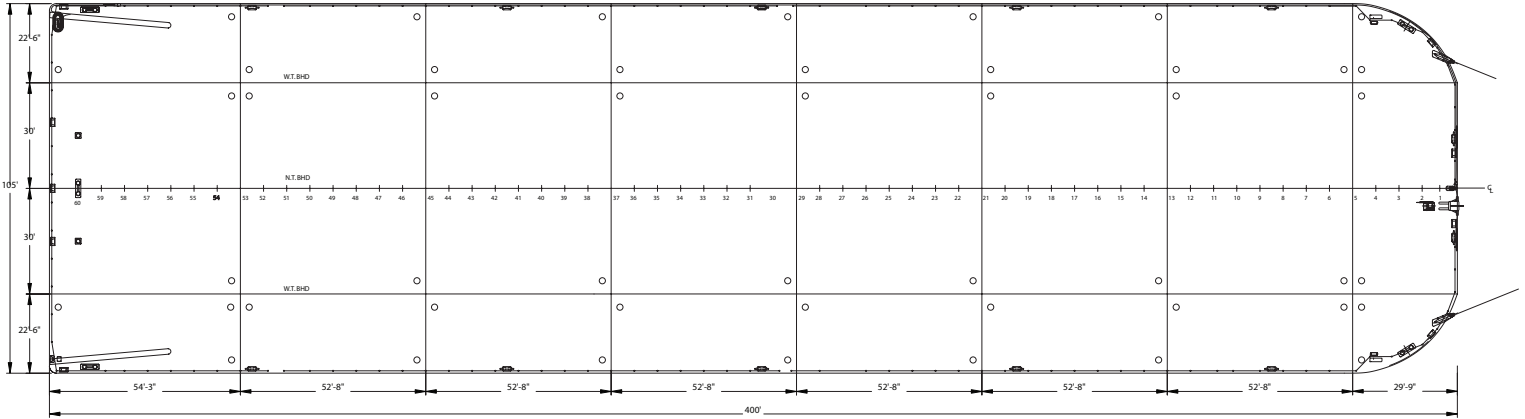
## Longitudinal Strength Data

Maximum Allowable Still Water Bending Moments  
 In Port 345,117LT-ft • 106,880MT-m  
 At Sea 157,468LT-ft • 48,766MT-m

### Maximum Allowable Still Water Shear Force

In Port 3,276LT • 3,328.57MT  
 At Sea 1,781LT • 1,809.58MT

DWT (S/T)	DRAFT (FEET)	DISPL (S/T,S.W.)	TPI
19000	19	23000	110
18000	18	22000	
17000	17	21000	
16000	17	20000	108
15000	16	19000	
14000	15	18000	
13000	14	17000	106
12000	14	16000	
11000	13	15000	
10000	12	14000	104
9000	11	13000	
8000	11	12000	
7000	10	11000	102
6000	9	10000	
5000	8	9000	
4000	7	8000	98
3000	6	7000	
2000	5	6000	
1000	4	5000	96
0	4	4000	
	3		



# 455 Series Allowable Loads

## Transverse Frames

Uniform Linear Load - 42,308lb/ft • 62.96MT/m  
 Point Load - 198,998lbs • 90.26MT

## Transverse Bulkheads

Uniform Linear Load - 82,094lb/ft • 122.17MT/m  
 Point Load - 547,293lb • 248.25MT  
 (only over web frames)

## Longitudinal Bulkheads

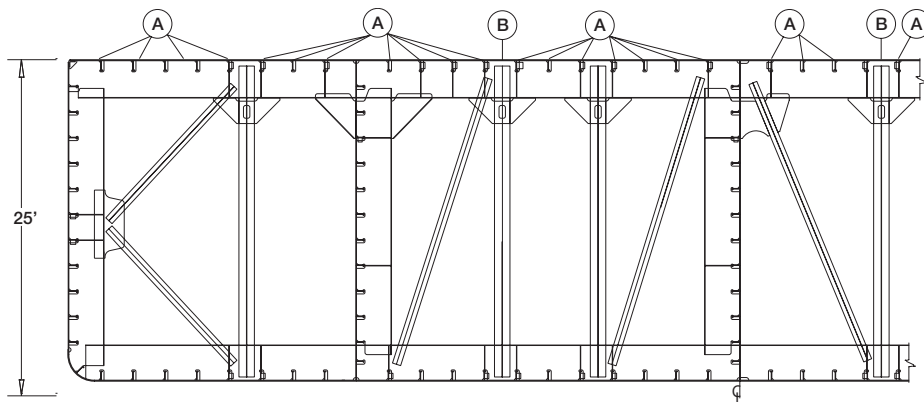
Uniform Linear Load - 74,722lb/ft • 111.20MT/m  
 Point Load - 515,205lb • 233.69MT  
 (only over web frames)

## Nominal Overall Deck Load Rating

4,200lb/ft<sup>2</sup> • 20.51MT/m<sup>2</sup>

## Intersection of Structures

Transverse Bulkhead and Longitudinal Bulkhead  
 814.89Kips • 369.63MT  
 Transverse Bulkhead and Side Shell  
 772.97Kips • 350.61MT  
 Transverse Frame and Side Shell  
 599.60Kips • 271.97MT



A - Longitudinal Stiffeners  
 B - Frame Stanchions

\*All information contained herein (including but not limited to any specifications, particulars, capacities, or capabilities) is believed to be correct, but is not guaranteed and is subject to change without notice.