



AT-12842 B-40085

100,000-Barrel Articulated Barge

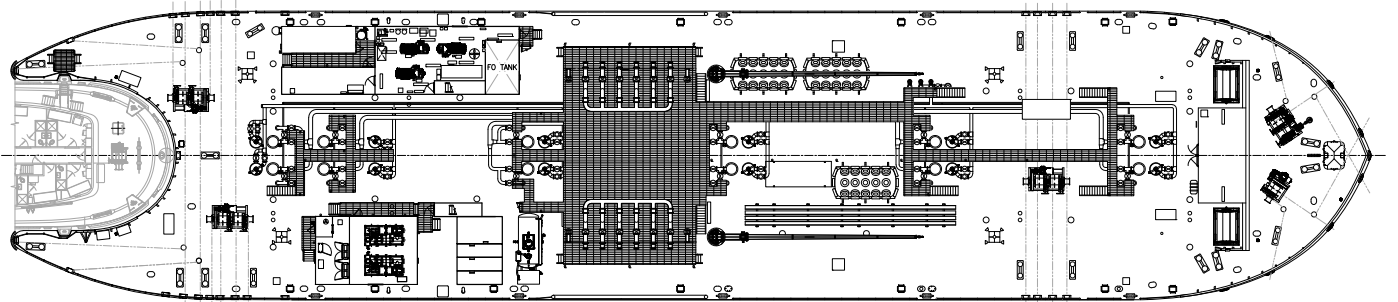
ATBs consist of a hydrodynamically efficient tank barge coupled with a high-horsepower tug via a hinged connection, allowing independent pitching while maintaining a solid connection for maneuverability. The tug has Azimuthing drives and an Intercon C-series coupling system with a lightening helmet. It features a closed-loop freshwater ballast system to handle fuel burn, approved by the USCG, eliminating the need to discharge ballast water into the sea. Designed to meet Ice Class and Polar Code requirements, the double-hulled ATB was built at Bollinger Marine Fabricators with Crowley managing construction.

Overall Dimensions

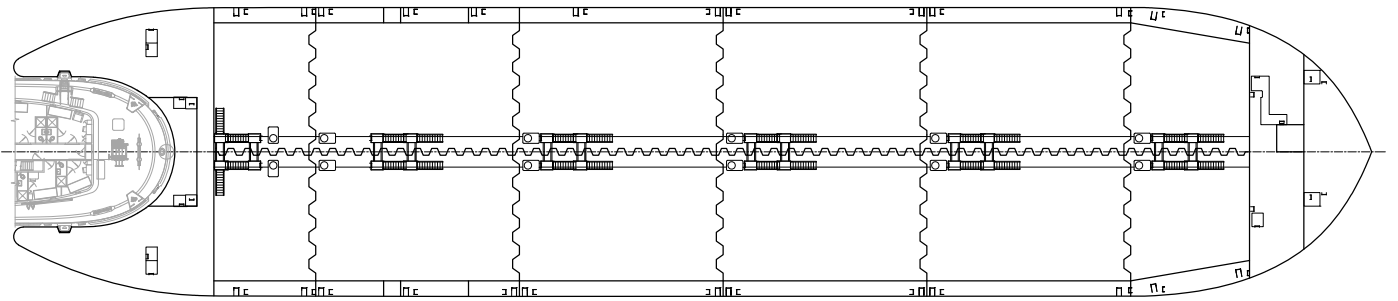
Length 128' **(tug)** 400' **(barge)**
 Beam 42' **(tug)** 85' **(barge)**
 Draft 18'6" **(tug)** 22' **(barge)**
 Bollard Pull 97 Short Tons
 Speed 11 knots
 Classification ABS ✱
 A1 Towing Vessel, ✱AMS, ✱ACCU, UWILD, Ice
 Class D0, IHM, SOLAS, Designed to IMO Polar
 Code for a Category C vessel **(tug)**
 ABS, ✱A1 Oil Tank Barge, CPS, BWT, UWILD,
 Ice Class D0, IHM **(barge)**

Specialized Equipment

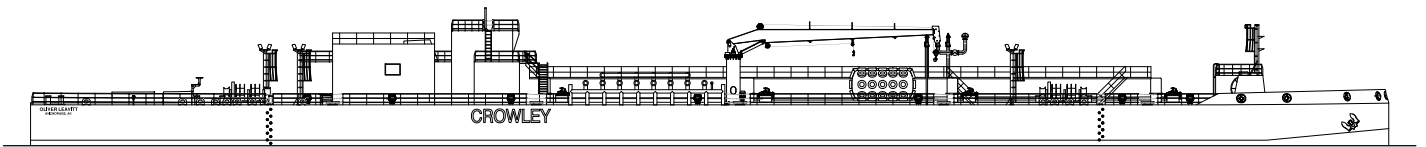
Main Engine 2: GE 8L250MDC
 Emissions Standard EPA Tier 4, IMO Tier 3 **(tug)**
 EPA Tier 3, IMO Tier 2 **(barge)**
 Installed Power 6,700 HP
 Propellers 2: 2800 mm Dia. Stainless-Steel
 Z-Drive 2: Schottel SRP-560
 Fuel 122,200 gal. **(tug)** 17,600 gal. **(barge)**
 Fresh Water 11,200 gal. **(tug)**
 Ballast 79,400 gal. **(tug)** 1,667,000 gal. **(barge)**
 Lube Oil 3,700 gal. **(tug)**



MAIN DECK



HOLD



OUTBOARD PROFILE