



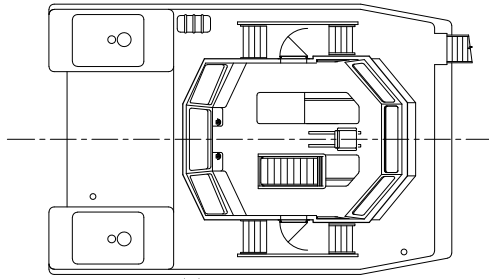
TES-11040

110' x 40' Tractor Tug

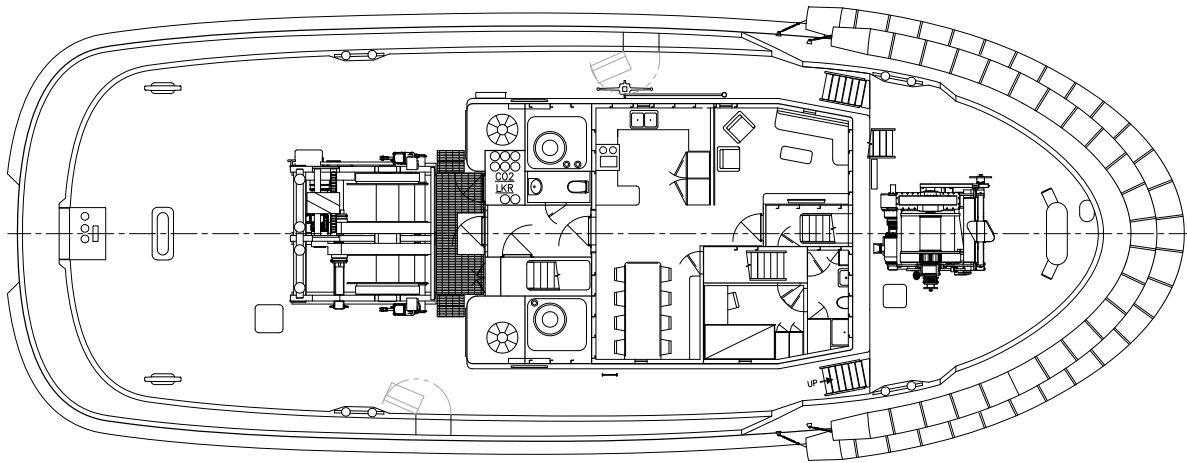
The new high performance tractor tug features some of the first-Tier IV engines meeting higher federal air emissions standards among U.S. tugboats. The 100-foot-long vessel features the ship assist and escort capabilities of smaller harbor tugs, while delivering improved towing performance and increased range of larger ocean-going tugs. With new ballast water treatment requirements on the horizon from the EPA and U.S. Coast Guard, the tug is designed without any ballast tanks to eliminate the need for ballast water discharge and the potential transfer of invasive species. This tug carries up to 4,500 gallons of urea to meet Tier IV emissions requirements. A large pilot house provides all-around visibility. The deckhouse includes a large mess and lounge area, with accommodation for a 10-person crew.

Overall Dimensions

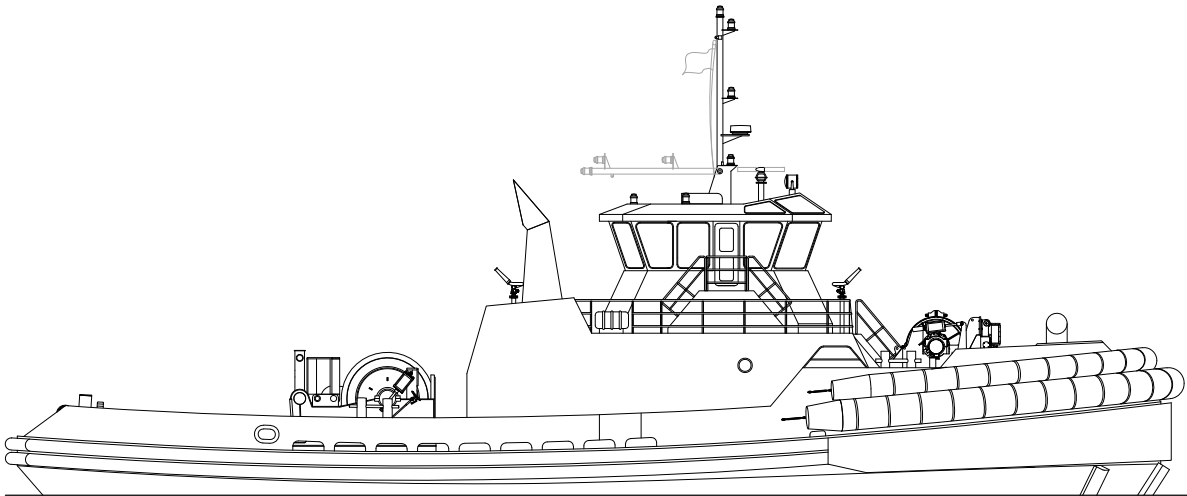
Molded Length.....	110'	Fuel Capacity.....	123,000 gal
Breadth.....	40'	Fresh Water.....	4,300 gal
Depth.....	18'	UREA.....	3,032 gal
Bollard Pull.....	103 ST	Double-drum Winch Aft.....	Rapp USA
Main Propulsion.....	2 x Cat 3516 Tier IV 3,385 HP each	Hawser Winch Forward.....	Markey
		Crew.....	10



BRIDGE DECK



MAIN DECK



OUTBOARD PROFILE