



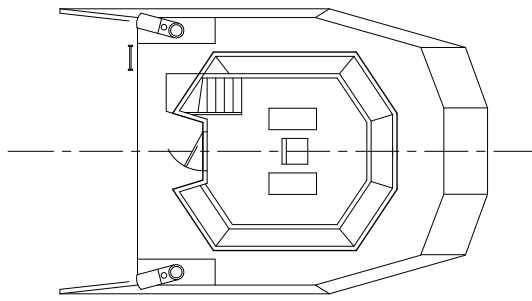
THS-06524

## 65' x 24' Z-Drive Tug

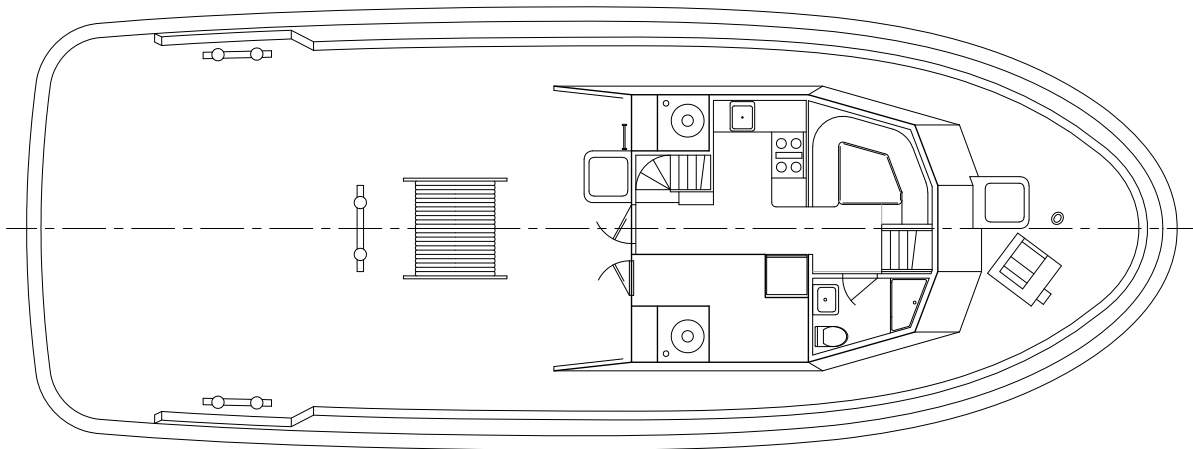
The 65-ft Z-Drive Tug is a multipurpose vessel that follows the general design and layout of a small ASD tug. Equipped with Caterpillar main engines driving Thrustmaster Z-drives, the vessel can operate as an assist tug for the docking and handling of barges and ships. The tug can tow inter-island and was developed to reduce adverse environmental impacts from the transportation of oil products. The large clear aft deck, measuring 31-ft long with 21-ft inside the bulwarks, is fitted with a hose reel for handling absorbent boom for oil spill response work. Storage lockers provide additional stowage for other response equipment. The vessel is fitted with the same fendering as one would find on a harbor tug and is equipped with a small fire monitor. There are berths for up to 4 crew below the main deck.

### Overall Dimensions

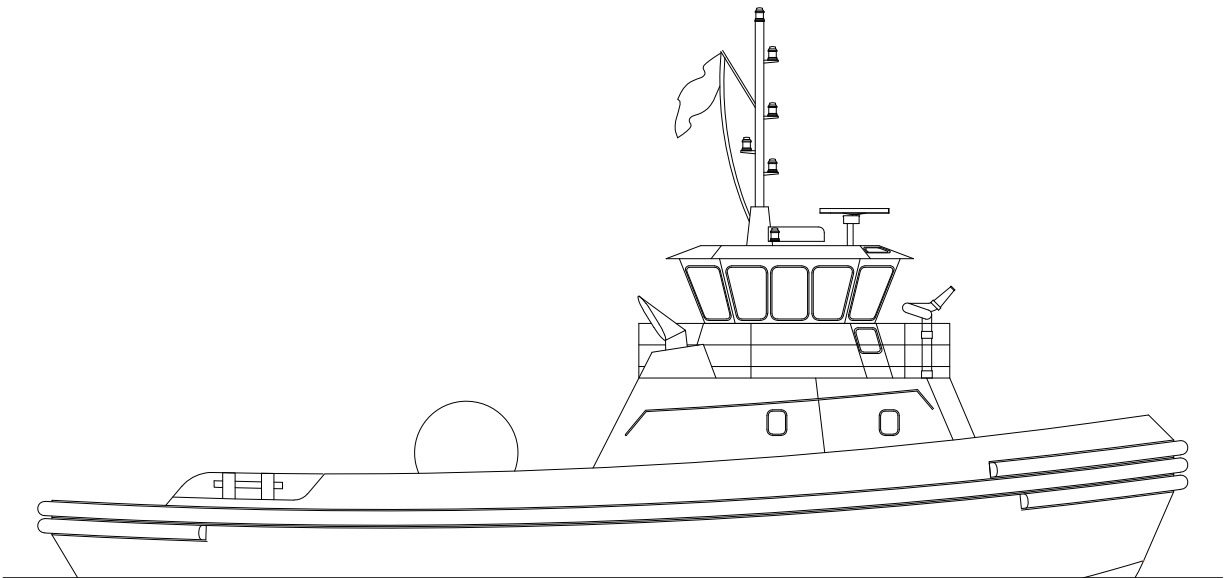
Molded Length .....	65'	Main Power .....	2 x CAT 3406E
Molded Breadth .....	24'	Propulsion .....	2 x Thrustmaster Z-Drives
Molded Depth .....	10'	Auxiliary Engines .....	2 x Northern Light MP445D, 45kW
Bollard Pull .....	14 ST	Hawser Winch .....	None
Horsepower .....	1,170 continuous BHP	Berths .....	4
Fuel Oil .....	9,300 gal		



BRIDGE DECK



MAIN DECK



OUTBOARD PROFILE

65'x24' Z-DRIVE TUG