



TWB-13939H

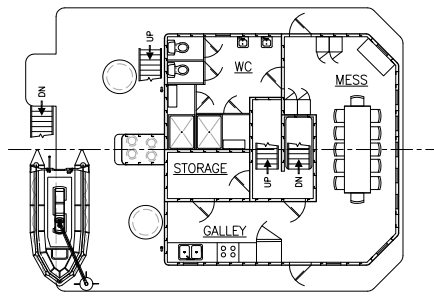
139' x 39' Debris Removal Vessel

The 139' x 39' Debris Removal Vessel was designed to remove debris and obstructions from high use navigation channels, thus providing clear and safe channels for general navigation. The vessel lifts wreckage, sections of piers and sunken derelict vessels and barges which are navigation hazards. The unique catamaran hull design enables the vessel to effectively trap floating debris between its hulls where it is collected in nets.

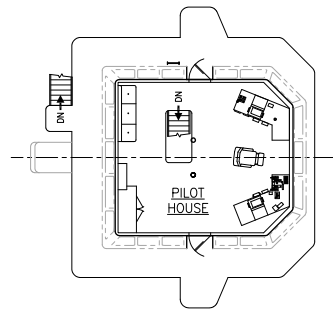
Overall Dimensions

Overall Length 139'
 Molded Breadth 39'
 Molded Depth 15'-6"
 Molded Design Draft 9'
 Potable Water 2,240 gal

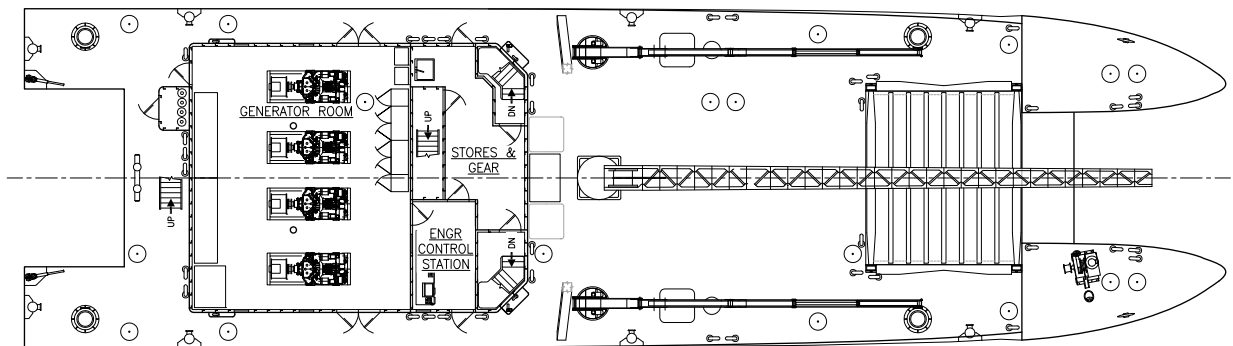
Propulsion Twin Screw,
 Hybrid Electric
 Generators Diesel, ~2,800 kW total
 Batteries ~2,500 kW-hr
 Fuel Capacity 8,250 gal



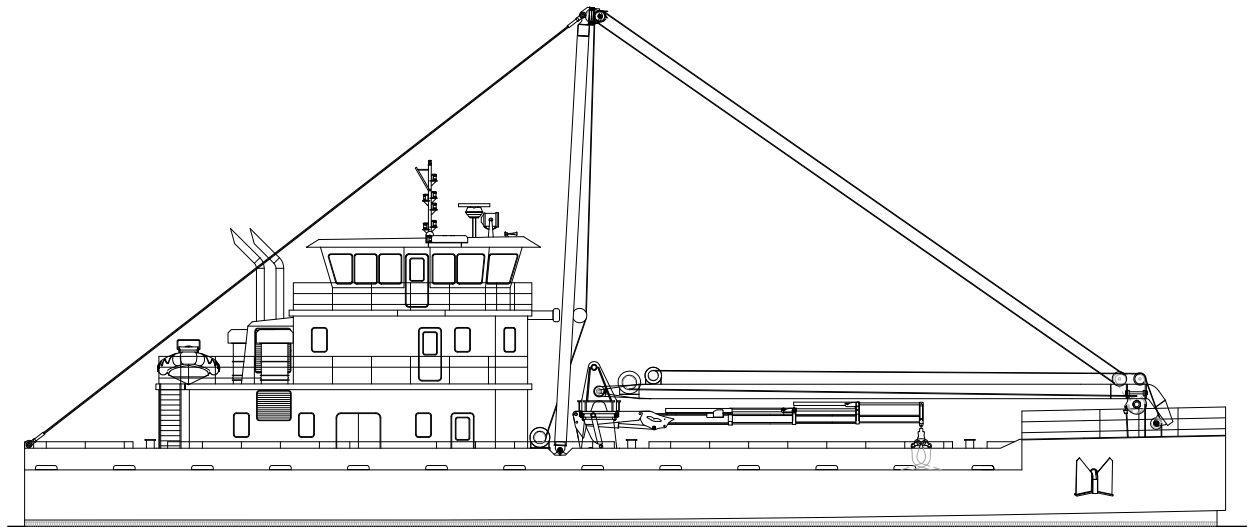
UPPER DECK



BRIDGE DECK



MAIN DECK



OUTBOARD PROFILE