



THS-07837

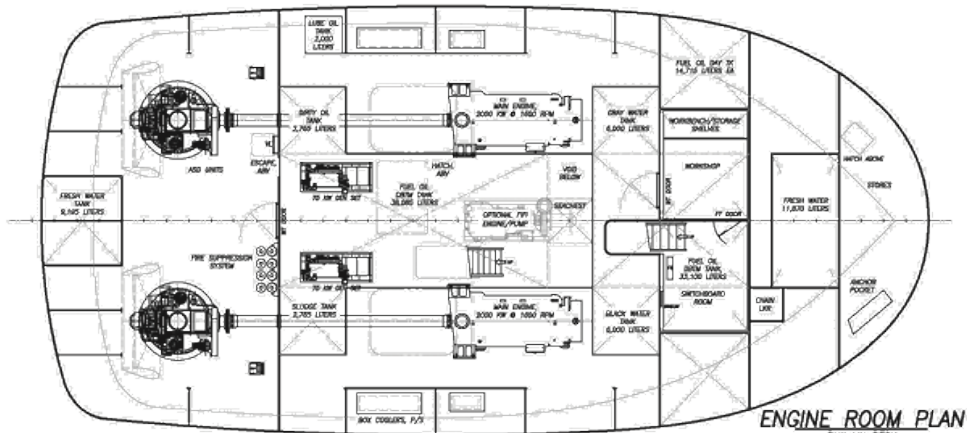
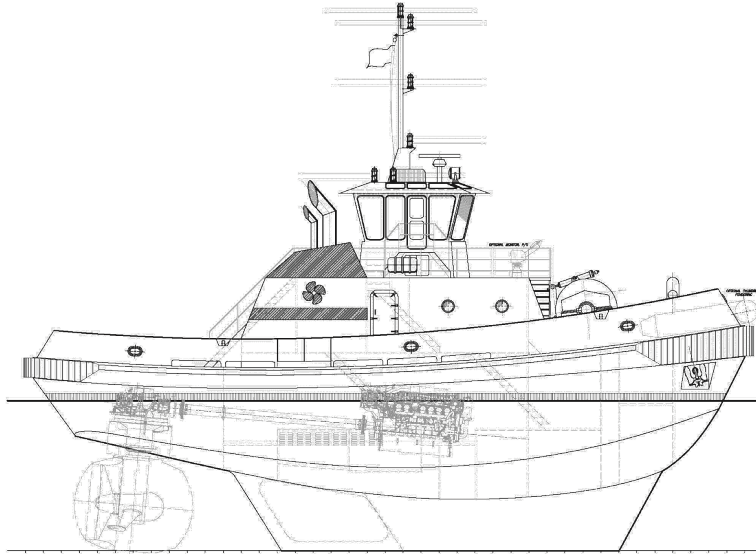
78' x 37' Ship Assist Tug

This design was developed to provide a maneuverable, powerful, yet smaller ship-assist tug to minimize some of the costs of building and operating a larger harbor tug. The design incorporates features that allow it to be built as either a conventionally powered tug or as an ASD.

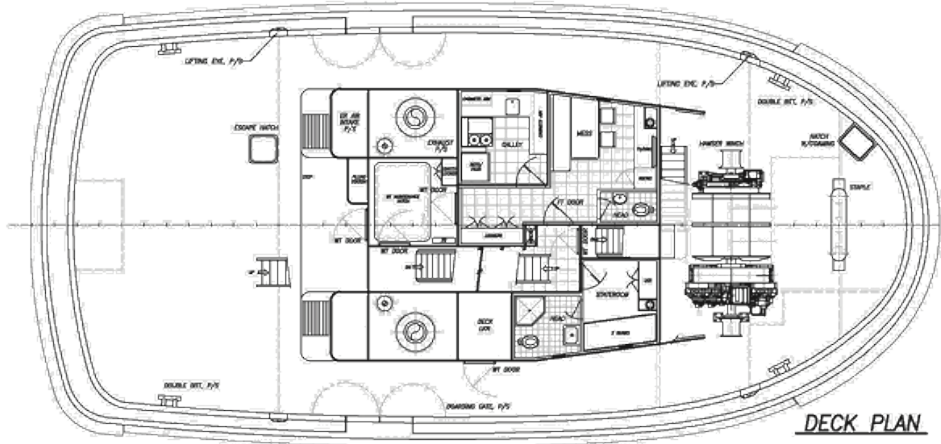
This vessel was designed to ABS class ∇ A1, Towing Vessel, ABCU, +AMS, UWILD, with Fire Fighting capabilities. Other options include forward hawser winch and a hydraulic crane. Full 360-degree visibility from the helm is assured with windows all around, and controls are located on consoles port and starboard of the centerline helm position.

Overall Dimensions

Length	78'	Propulsion System	2 x Z-Drives
Breadth	37'	Power Generators	2 x 75 kW
Draft	14'-8"	Bollard Pull	65 mT
Offship Fire Fighting	2 x monitors w/ water spray	Fuel Oil Storage Tanks	18,805 gal
Speed at Design Draft	12 knots	Fuel Oil Day Tanks	7,775 gal
Main Engine	2 x 2,000 kW @ 1800 RPM	Lube Oil	528 gal
		Gray Water Holding	1,585 gal



ENGINE ROOM PLAN
 BLW MAIN DECK
 SCALE: 1:50



DECK PLAN