

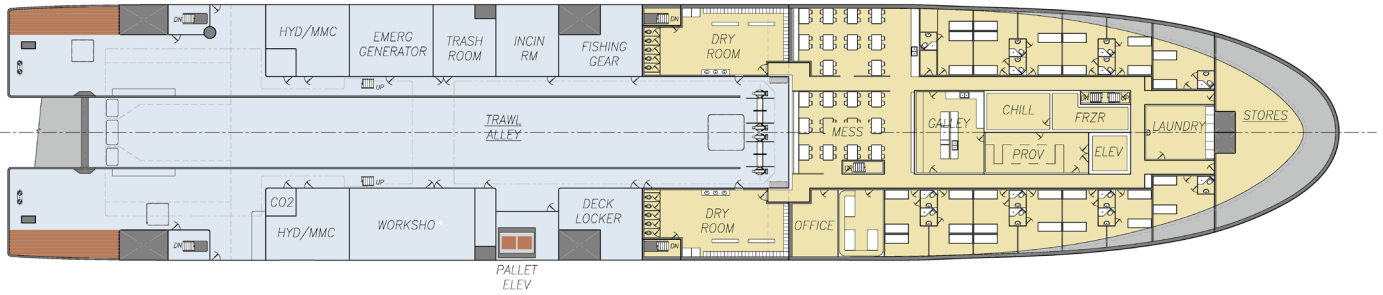
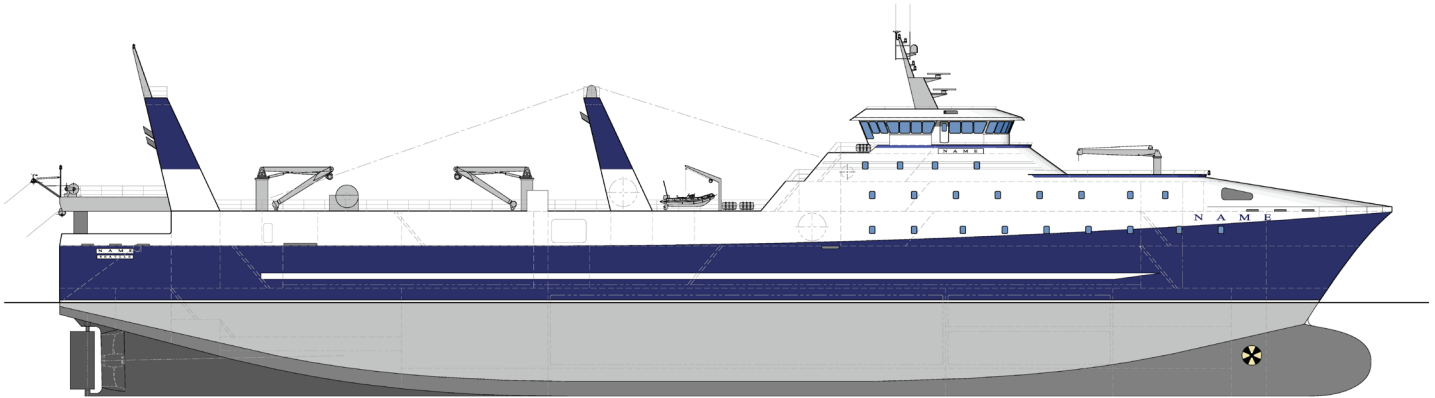


FTF-11522M

115m x 22m Factory Freezer-Trawler Concept

These vessels are configured with easy-to-build single-chine hulls, which offer a balanced compromise between construction cost and hydrodynamic hull efficiency. They can also be configured with molded (non-chine) hulls with developable surfaces when hull efficiency is a primary consideration.

Crowley's engineering services team delivers a full range of marine and engineering solutions. This includes detail and conceptual design, shipyard management, and on-site consulting services for all types of marine projects anywhere in the world. Our vessel design and marine engineering services are both extraordinary and cost effective. No matter the size and scope of your marine project, our professionals will help you achieve your objectives in the safest and most efficient manner possible.



Vessel Specifications

Overall Dimensions

| | | | |
|------------------|----------------------------------|---------------|---|
| Length | 114.6 m (376'-0") | Freezer Hold | 4,000 m ³ (141,300 ft ³) |
| Breadth | 22.0 m (72'-2") | Meal Holds | 1,350 m ³ (47,700 ft ³) |
| Depth | 9.3 m (30'-6") | Fuel Capacity | 600 m ³ (158,500 gal) |
| Draft | 8.0 m (26'-3") | Fresh Water | 115 m ³ (30,400 gal) |
| Propulsion | Single Screw, Controllable Pitch | Berths | 156 |
| Propulsion Power | 7,200 KW (9655 HP) | Class | DNV-GL ✕1A1, Stern Trawler |

206.332.8090

crowley.com/vesseldesign
Seattle, WA • Jacksonville, FL

CROWLEY[®]
People Who Know[®]