

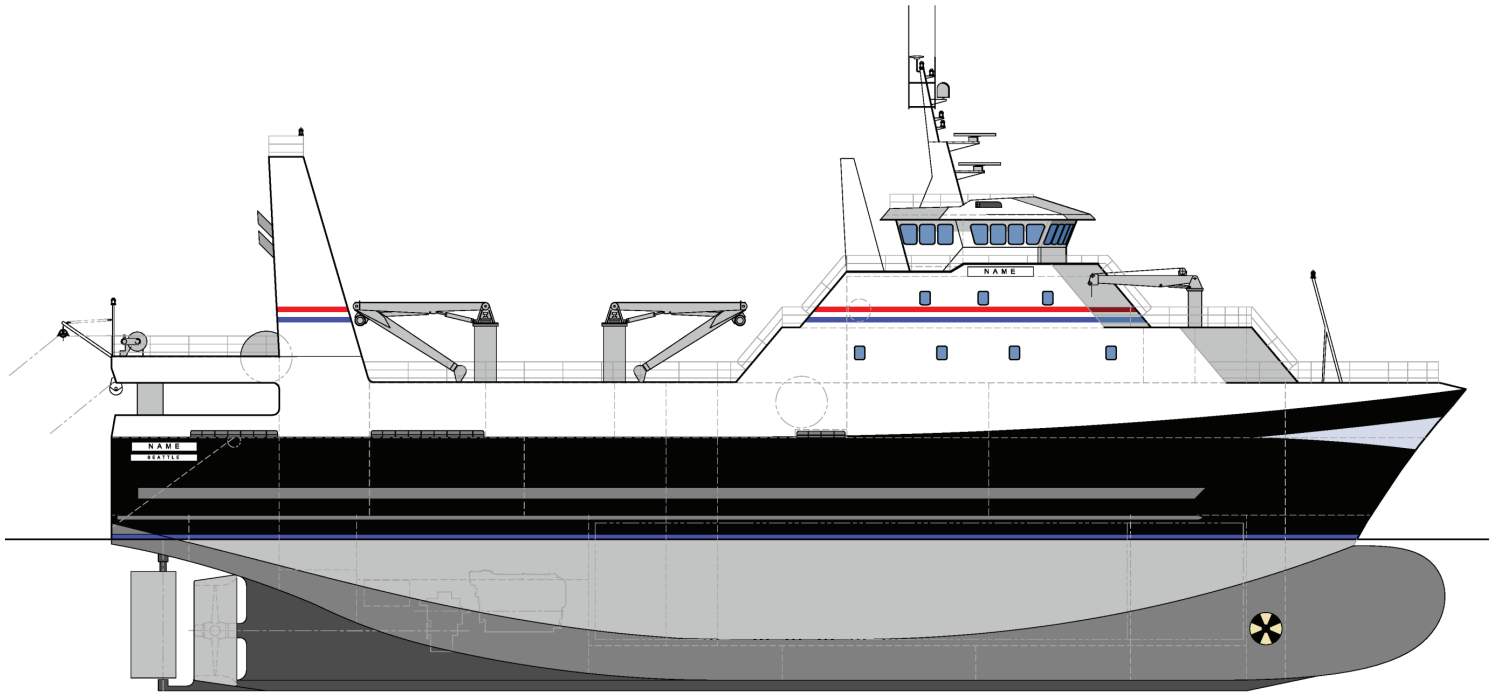


FTF-21060

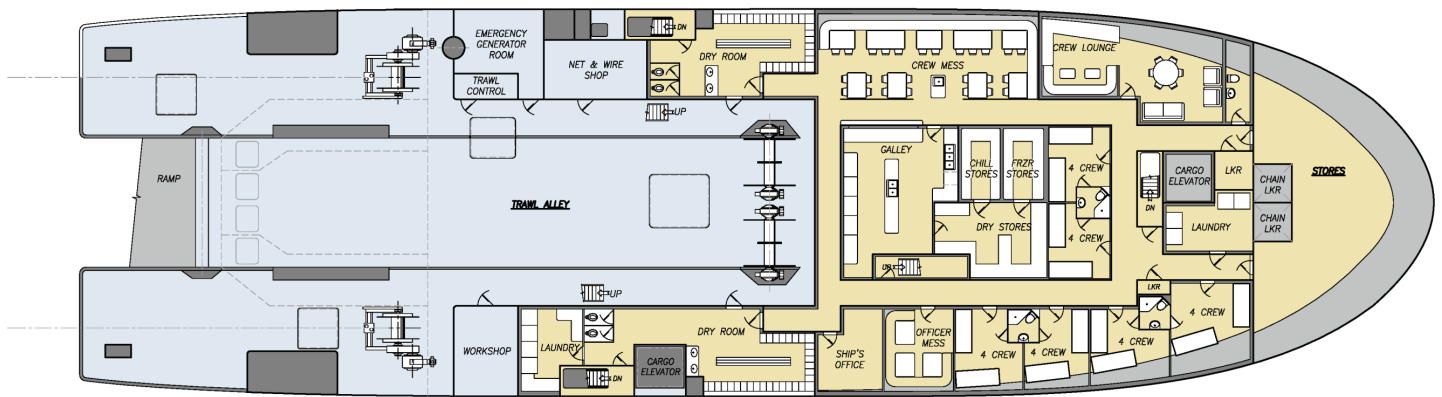
210' x 60' Factory Freezer-Trawler Concept

This concept design is a steel-hull factory freezer-trawler with a high-efficiency single-chine hull and an integrated bulbous bow. It is designed for operations in the Bering Sea with a heavy ice belt forward and equipment and features to maximize productivity and safety. The hull is configured with a large freezer hold, with refrigeration machinery, engine room, fuel deep tanks and steering compartments aft. The main deck features a large processing space with four fish bins, storage, and auxiliary machinery spaces. The efficient trawling arrangement includes two locker rooms, three net reels, two trawl winches, a net platform and a stern ramp. Accommodations are in three levels with a mix of four, two, and one-person staterooms. The wheelhouse features 360° visibility and a dedicated trawl station.

Crowley's engineering services team delivers a full range of marine and engineering solutions. This includes detail and conceptual design, shipyard management, and on-site consulting services for all types of marine projects anywhere in the world. Our vessel design and marine engineering services are both extraordinary and cost effective. No matter the size and scope of your marine project, our professionals will help you achieve your objectives in the safest and most efficient manner possible.



Outboard Profile



Trawl Deck

Vessel Specifications

Overall Dimensions

Length	210'-2" (64.1 m)	Hold Capacity	75,000 ft ³ (2,124 m ³)
Breadth	60'-0" (18.3 m)	Fuel Capacity	150,000 gal (568 m ³)
Depth	25'-8" (7.8 m)	Fresh Water	12,500 gal (47.3 m ³)
Propulsion	Single Screw Diesel	Berths	60
Propulsion Power	5000 HP (3728 KW)	Class	ABS ✕A1 Fishing Vessel, ✕AMS, ABCU

206.332.8090

crowley.com/vesseldesign
Seattle, WA • Jacksonville, FL

CROWLEY[®]
People Who Know[®]