



CB-18448

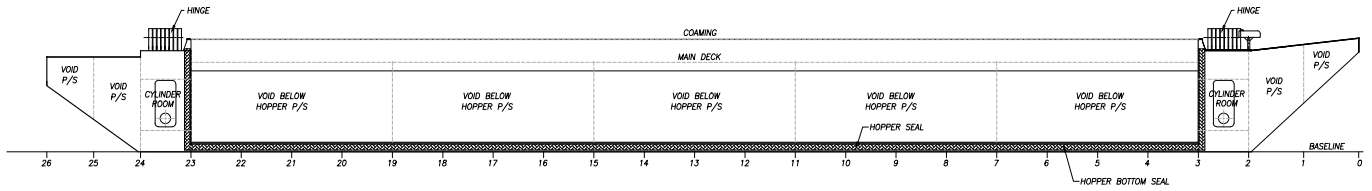
184' x 48' Hopper Barge

This 184' x 48' vessel is an unmanned, non-self-propelled, steel, split-hull hopper barge, capable of transporting cargoes in coastwise and inland service.

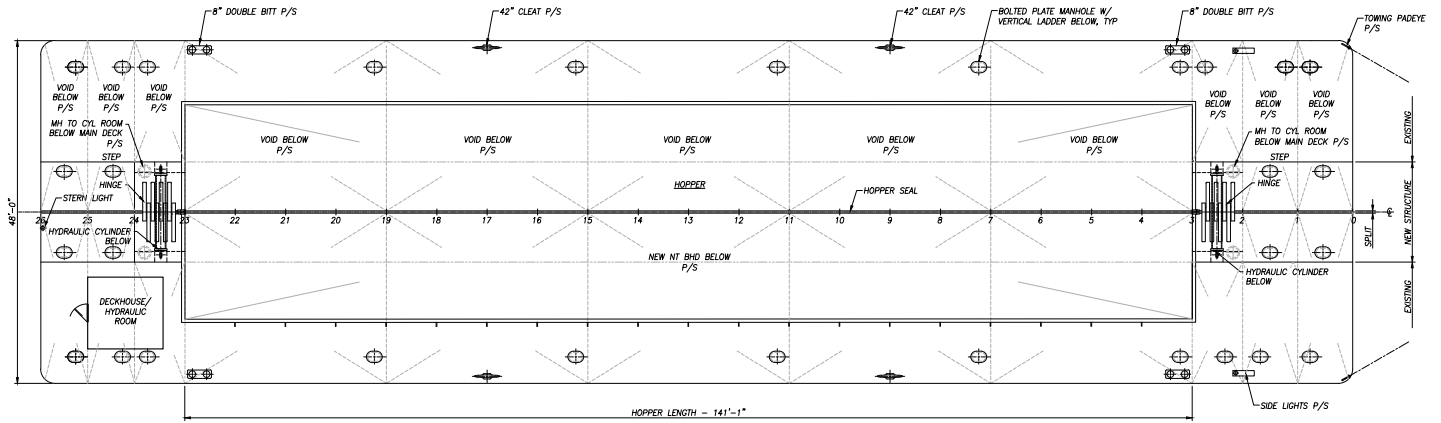
Each barge half-hull is subdivided into three compartments in the hopper midbody, two compartments in the forward rake and one compartment in the stern rake for a total of six watertight compartments in each half-hull. In addition, two-cylinder wells are provided at each end of the hopper. These wells are open on the centerline and access to the cylinders is provided through non-tight deck hatches. Each barge half-hull is an intact structure, and the two halves are joined together at the main deck level with two hinges, located at either end of the hopper. The hulls are opened and closed by the action of large hydraulic cylinders powered by self-contained, diesel-driven, remote radio-controlled, hydraulic pumping system.

Specification Highlights

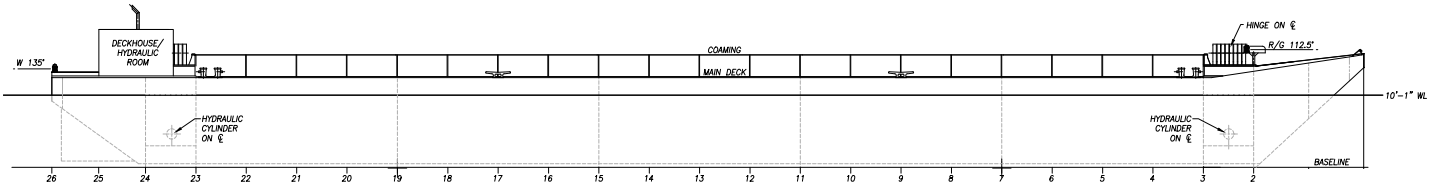
Length	183'-9"	Molded Depth to Deck	12'-7"
Length at Waterline.....	179'-7"	Fuel	490 gal
Molded Breadth at Deck.....	48'	Hydraulic Oil.....	500 gal



INBOARD PROFILE $\Delta^4 \Delta^1$
 LOOKING TO PORT
 SCALE: 1/8"=1'-0"



MAIN DECK PLAN $\Delta^4 \Delta^2 \Delta^4 \Delta^1$
 SCALE: 1/8"=1'-0"



OUTBOARD PROFILE $\Delta^4 \Delta^1 \Delta^2 \Delta^4 \Delta^1$
 SCALE: 1/8"=1'-0"