



TLH-15144

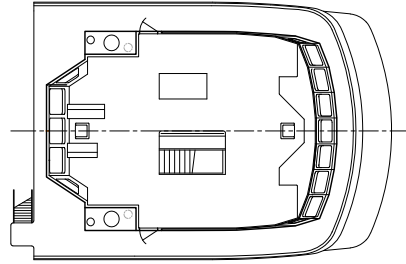
151' x 44' Line Haul Tug

The 151' x 44' Line Haul Tug is designed to accommodate a variety of propulsion packages, both conventional and Z-drive. The baseline Z-drive configuration comes equipped with 6056 kW (8120 HP) and twin Schottel 3030 drive units, providing a bollard pull of 110 to 121 short tons. Dynamic positioning (DP1 or DP2) is an available option. To protect the environment, this design is equipped with a double hull in way of oil tanks. Special construction techniques have been designed into the vessel, reducing both cost and time of construction.

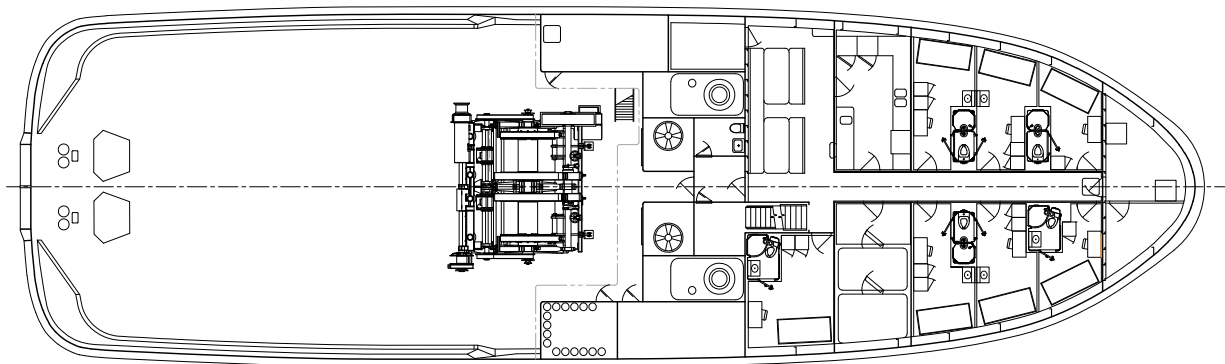
The generous accommodation spaces are laid out in a simple plan, providing easy access and escape paths. Berthing accommodates up to fifteen crew members and supernumerary personnel. An entry vestibule with washroom is arranged to keep accommodation spaces clean. The pilothouse provides near 360-degree visibility, with a deep visor and angled windows to reduce glare.

Overall Dimensions

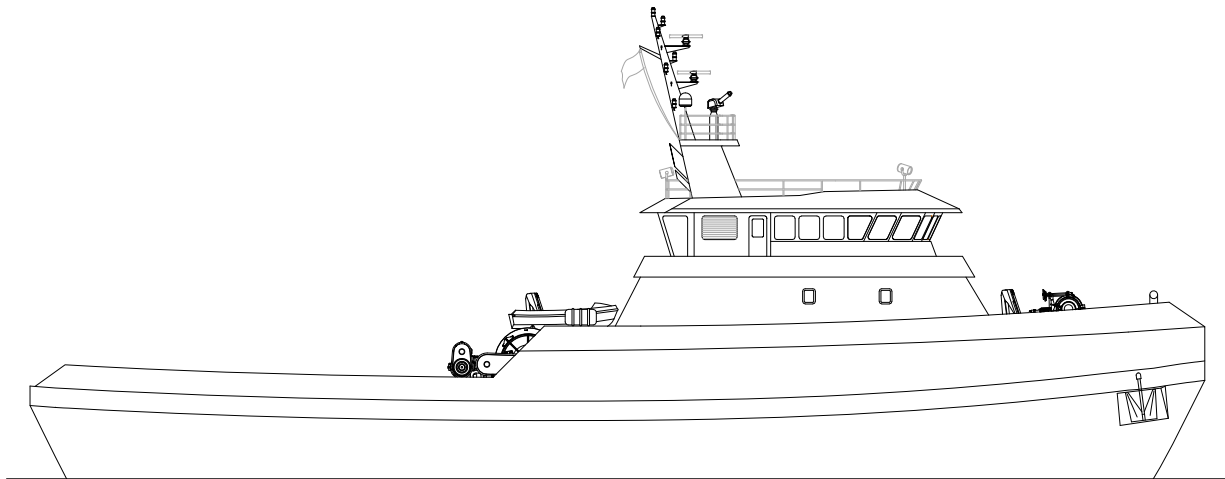
Molded Length	150'-11"	Fuel	177,000 gal Z-drive, 195,000 gal Conventional
Molded Breadth	44'-3"	Propulsion	2 x 3028 kW Main Engine, Tier III 2 x Azimuth stern drives or Conventional twin screw in nozzle
Molded Depth	24'-3"	Winch ...	Markey TDS-40UL, diesel driven Bare drum pull 121,220 lbs @33 ft/min Two drums, 3000 ft of 2 ½" wire each
Draft	22'-4"	Berths	15
Bollard Pull	110-121 ST		
Towing Speed	8-10 knots		
Service	Line Haul, Offshore Escort, Salvage		



BRIDGE DECK



MAIN DECK



OUTBOARD PROFILE