

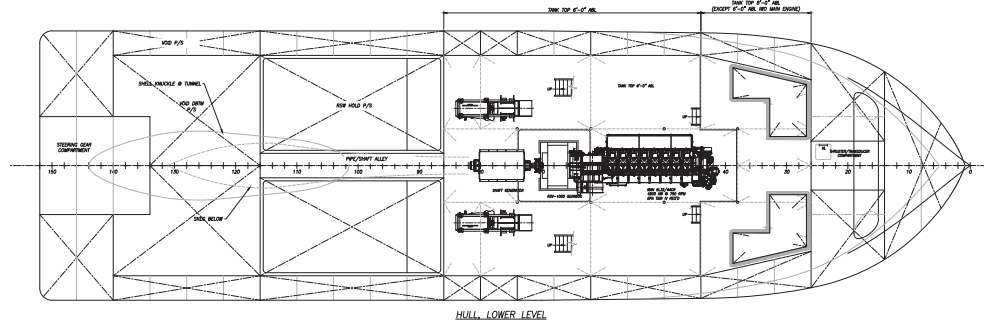
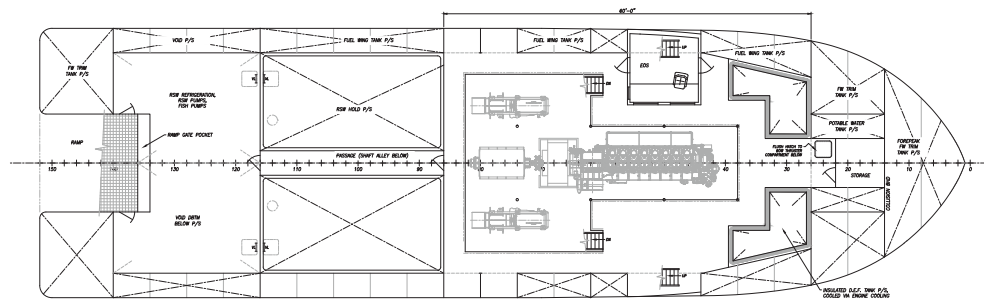
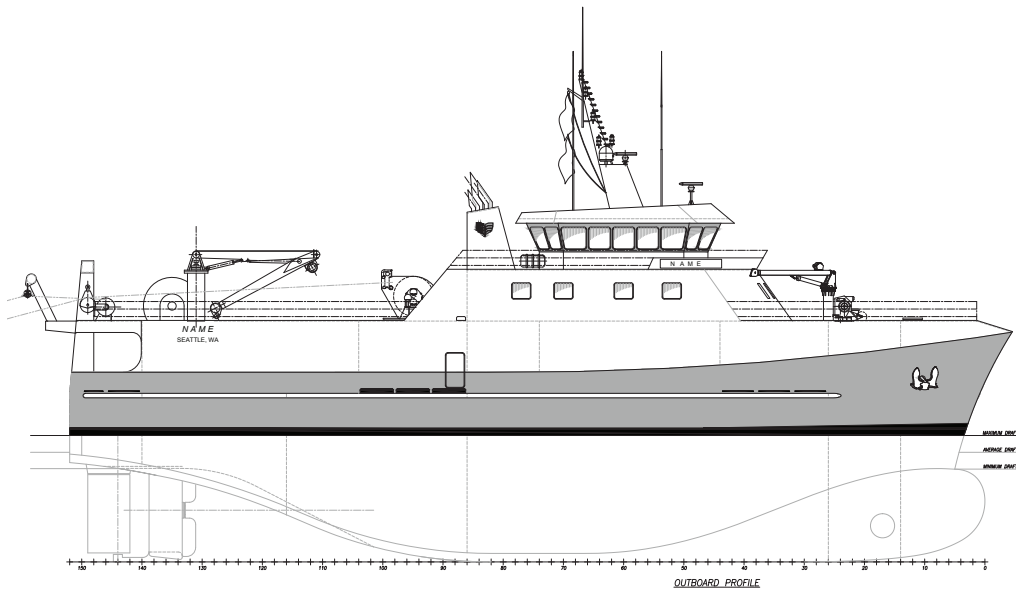


FTR-15744

## 157' RSW Trawler Concept

The 157' Trawler Concept is designed to fish in concert with a processing mothership and has a small hold capacity for transient loads. This vessel is also configured for towing cod-ends, with about 75-80 MT of bollard pull. Additionally, this vessel has its engine room and house forward, with holds amidships with storage and steering aft. Also, this vessel has a trawl tunnel under the house to accommodate large cod-ends.

Crowley's engineering services team delivers a full range of marine and engineering solutions. This includes detail and conceptual design, shipyard management, and on-site consulting services for all types of marine projects anywhere in the world. Our vessel design and marine engineering services are both extraordinary and cost effective. No matter the size and scope of your marine project, our professionals will help you achieve your objectives in the safest and most efficient manner possible.



# Vessel Specifications

## Overall Dimensions

|                 |  |               |  |
|-----------------|--|---------------|--|
| Length, Overall | 156'-7" (47.7m)                              | Hold Capacity | 14,600 ft <sup>3</sup> (413 m <sup>3</sup> ) |
| Breadth         | 44'-0" (13.4m)                               | Fuel Capacity | 158,500 gal (600 m <sup>3</sup> )            |
| Depth           | 28'-0" (8.5m)                                | Fresh Water   | 7,100 gal (26.9 m <sup>3</sup> )             |
| Propulsion      | Single Screw, Fixed Pitch,<br>4,200-4,400 HP | Berths        | 9  |
|                 |  | Class         | ABS ✕A1 Stern Trawler, Ice                   |