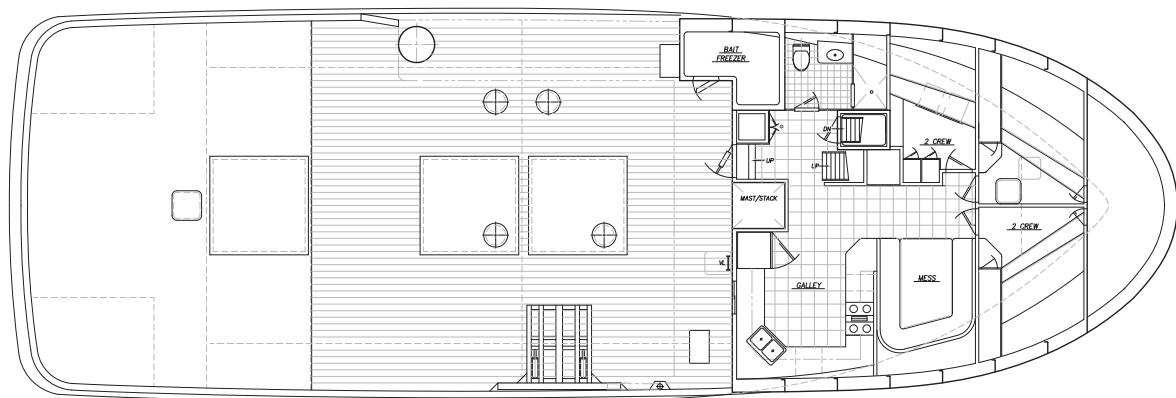
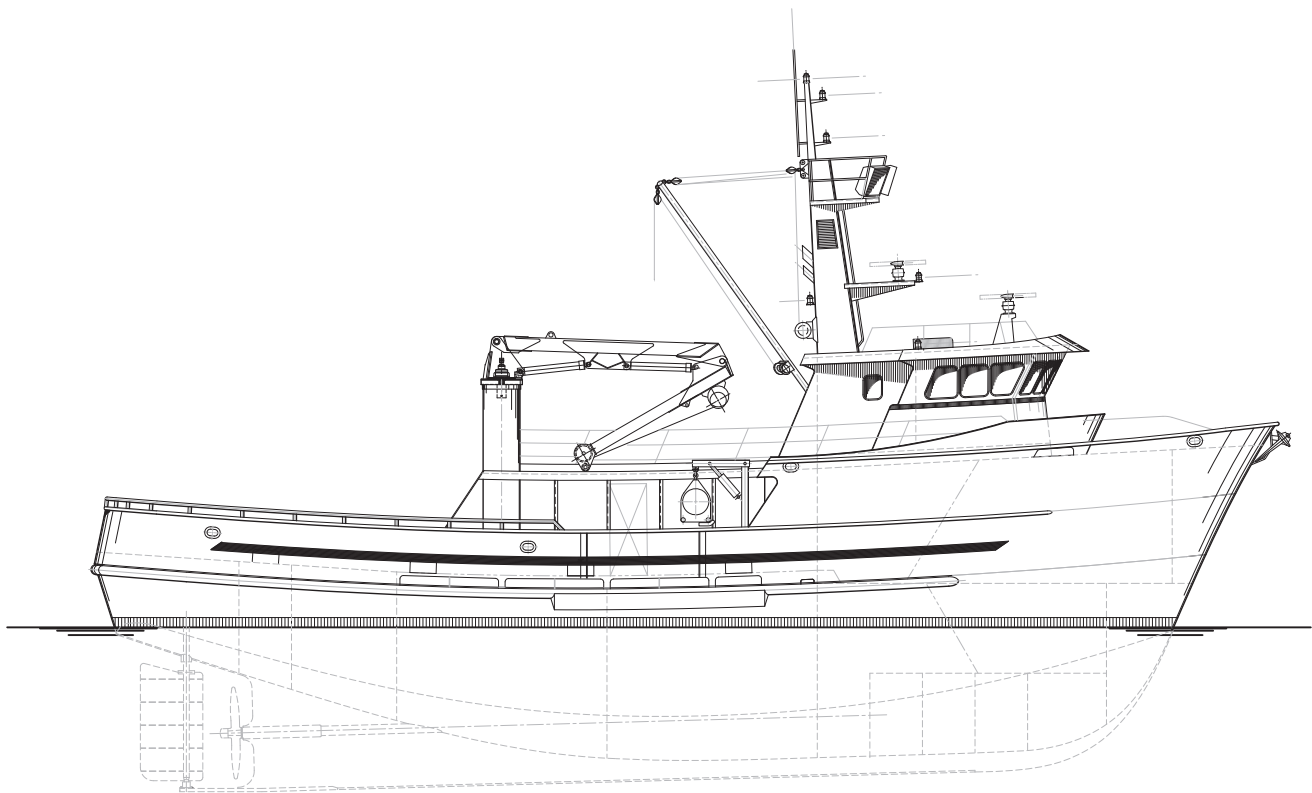


FVC-09030

## 90' Crabber

The *Controller Bay* is a conventional single-chine, steel-hull vessel with house and engine room forward. Fuel is carried in wing tanks outboard of the three holds. All three holds are set up for RSW operations. The engine room has three generators, two 175-KW sets for normal ship loads and a smaller 40-kW set for harbor loads. Deck machinery includes the standard outfit for a pot fishing vessel, with hauling davit and picking boom forward to starboard, a pot launcher amidships and a knuckle boom crane to port. A fixed wingwall extending from the foc'sle bulkhead aft to the crane affords protection for the crew.

The crew accommodations are located forward on the main deck, with the Captain's stateroom positioned behind the wheel-house. A large galley and mess area provide a comfortable gathering place for the crew.



# Vessel Specifications

## Overall Dimensions

Length Overall	90'-0" (27.4 m)	Hold Capacity	6,394 ft <sup>3</sup> (181.1 m <sup>3</sup> )
Breadth	30'-0" (9.1 m)	Fresh Water	5,958 gal (22.6 m <sup>3</sup> )
Depth	13'-3" (4.0 m)	Berths	7
Propulsion	Single Screw Diesel, Fixed Pitch	Gross Tonnage	183 US, 220 ITC
Propulsion Power	850 HP (634 KW)		

206.332.8090

[crowley.com/vesseldesign](http://crowley.com/vesseldesign)

Seattle, WA • Jacksonville, FL

**CROWLEY**<sup>®</sup>  
People Who Know<sup>®</sup>