



FVG-07630

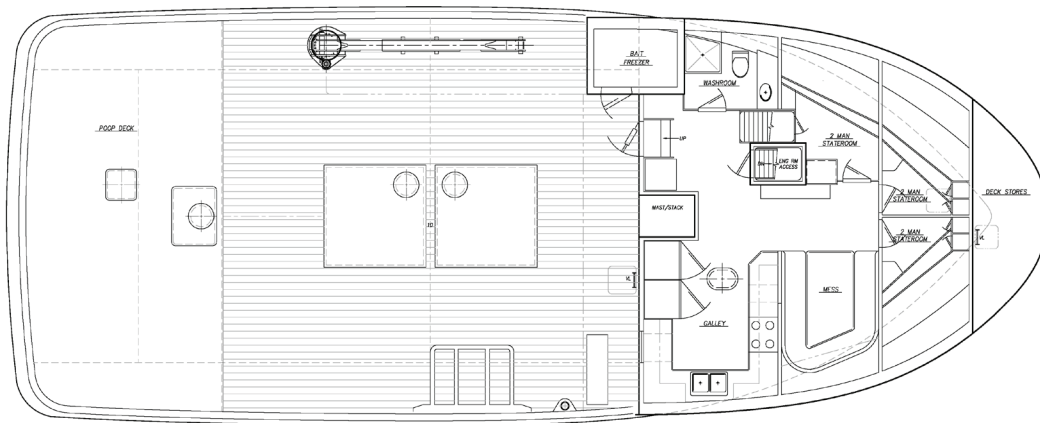
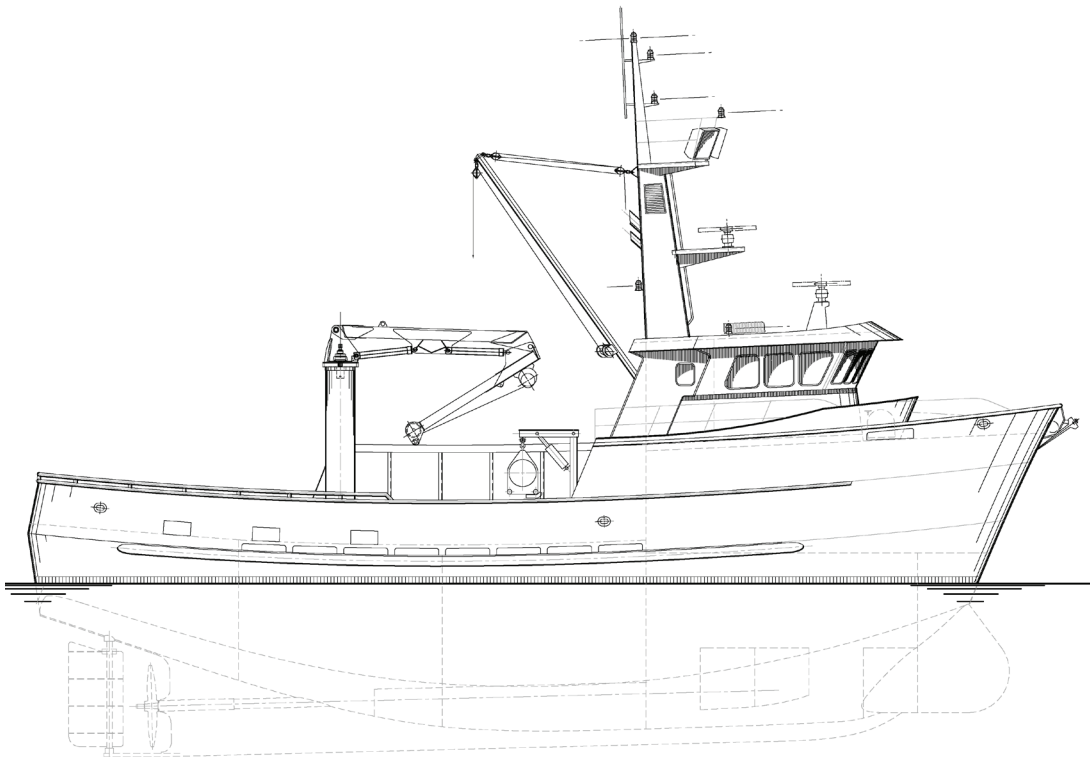
76' Combination Fishing Vessel

This vessel is the perfect step up from a 58' limit seiner. It has excellent stability for pot or trawl fisheries, and a large hold capacity for efficient fishing. The large clear working deck can be outfitted for just about any fishery. The vessel has excellent seakeeping characteristics and comfortable crew accommodations. This vessel was designed and built to load line standards, minimizing changes needed to bring it into compliance with the classification rules.

206.332.8090

crowley.com/vesseldesign

Seattle, WA • Jacksonville, FL



Vessel Specifications

Overall Dimensions

Length	76'-0" (23.2 m)	Propulsion	Single Screw Diesel
Breadth	30'-0" (9.1 m)	Power	720 HP (537 KW)
Depth	13'-0" (4.0 m)	Fuel Capacity	21,009 gal (79.5 m ³)
Hold Capacity	5,118 ft ³ (145 m ³)	Fresh Water	3,027 gal (11.5 m ³)
Berths	7	Gross Tonnage	168

206.332.8090

crowley.com/vesseldesign

Seattle, WA • Jacksonville, FL

CROWLEY[®]
People Who Know[®]