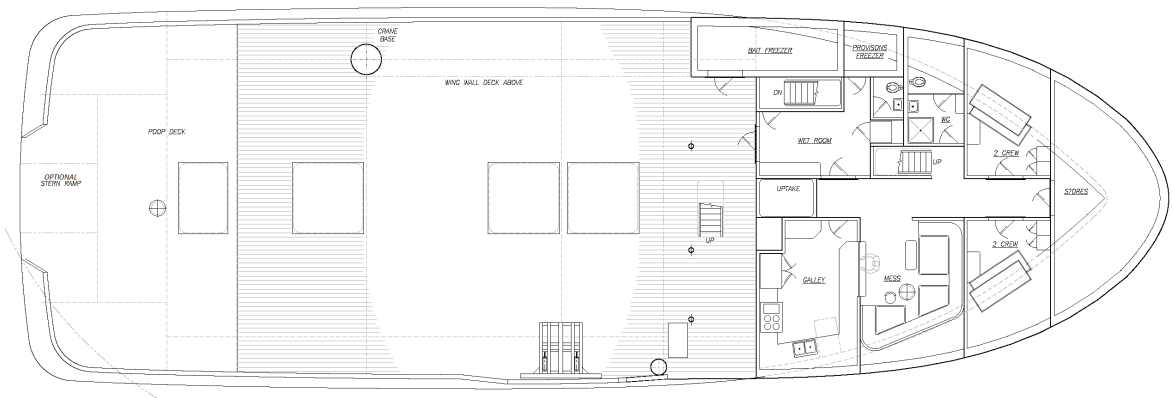
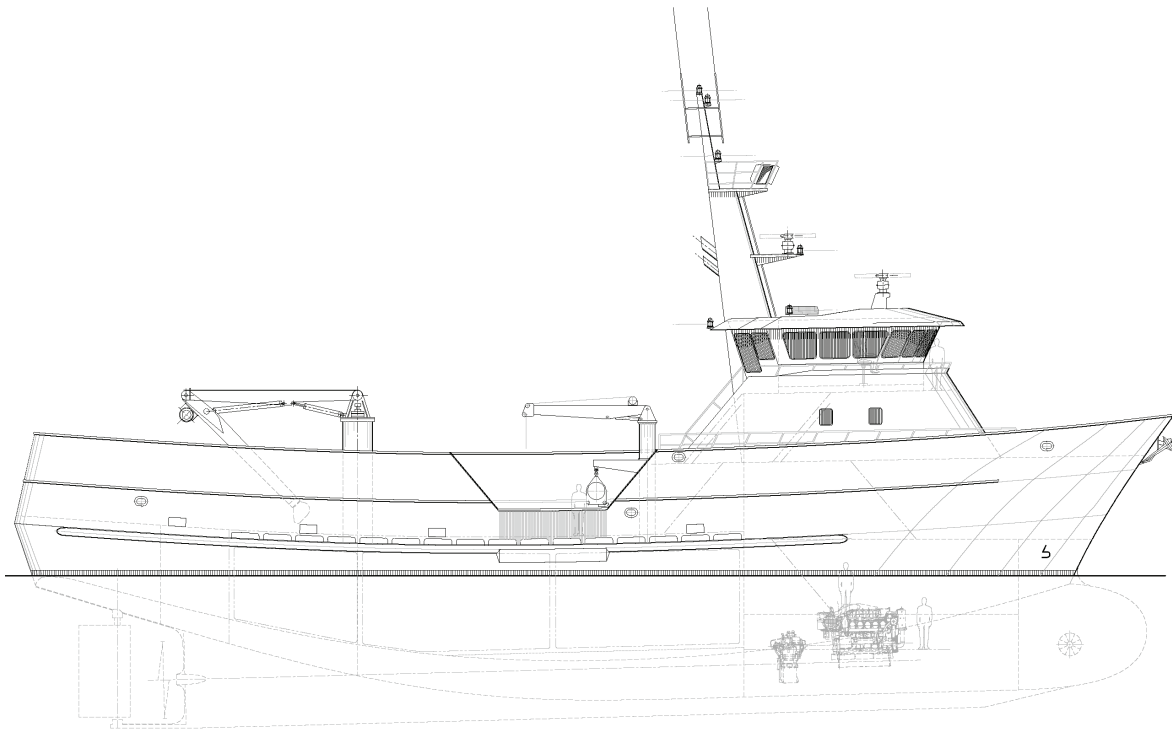


FVG-13544

## 135' Combination Fishing Vessel

This vessel combines seaworthiness with an efficient hull and sufficient stability to carry deck loads for trawling and pot fishing. Large crew spaces to enable the vessel to accommodate an observer or operate as a scientific charter vessel. The standard layout includes a spacious galley/messing area and two 2-person staterooms on the Main Deck, with the Captain's stateroom, one 2-person stateroom, one 4-person stateroom, and a climate-controlled electronics room on the Foc'sle deck. The Tank layout includes three insulated RSW holds and five pairs of fuel wing tanks. Additional fuel can be added by converting the double bottom voids into fuel if desired. A dry hold aft of the RSW holds provides space for storing additional gear and supplies.



# Vessel Specifications

## Overall Dimensions

Length	135'-0" (41.1 m)	Speed	13 knots cruise
Breadth	44'-0" (13.4 m)	Fish Hold Volume	19,500 ft <sup>3</sup> (552 m <sup>3</sup> )
Depth	18'-0" (5.5 m)	Fuel Capacity	80,000 gal (303 m <sup>3</sup> )
Draft	17'-9" (5.4 m)	Fresh Water	8,300 gal (31.4 m <sup>3</sup> )
Propulsion	Single Screw Diesel, Fixed Pitch	Berths	11
Horsepower (total)	1600 (1193 KW)	Gross Tonnage	< 200 US

206.332.8090

[crowley.com/vesseldesign](http://crowley.com/vesseldesign)

Seattle, WA • Jacksonville, FL

**CROWLEY**<sup>®</sup>  
People Who Know<sup>®</sup>