

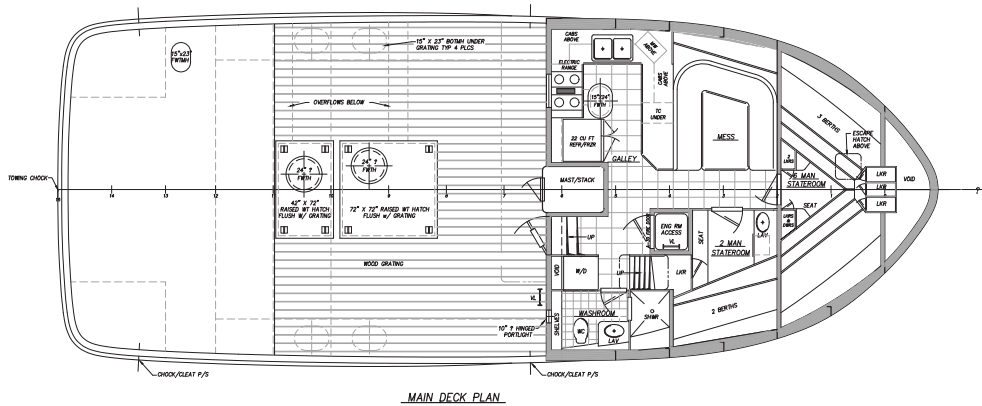
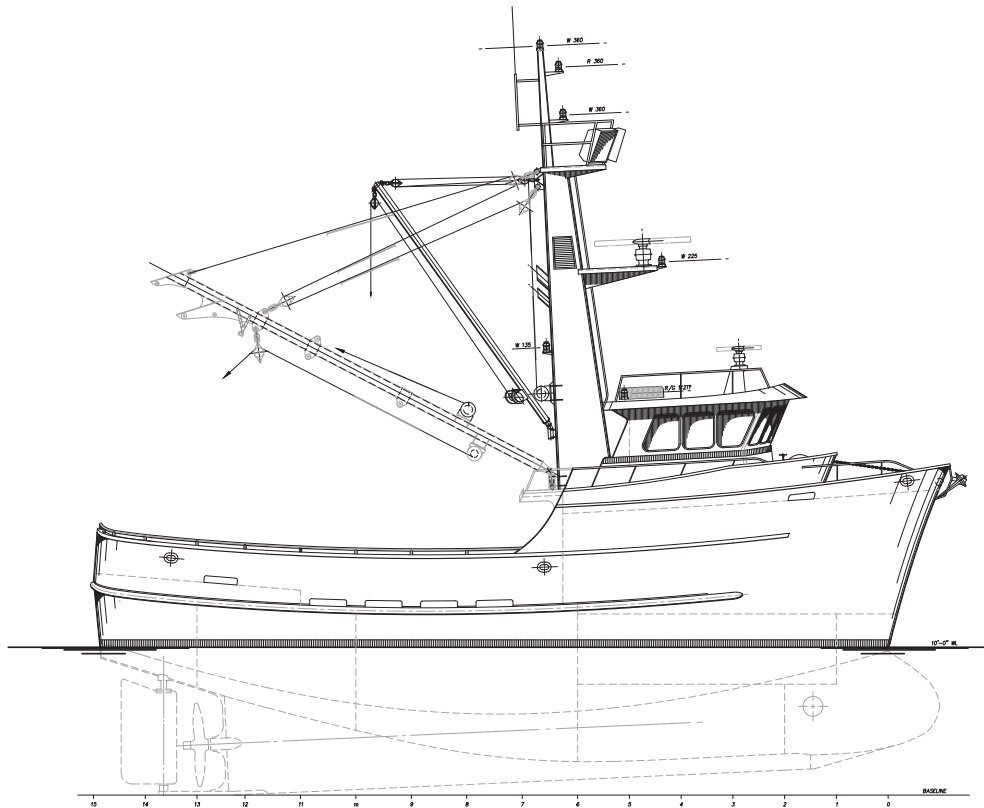


FVS-05823

58' x 23' Fishing Seiner

The *F/V Anna Lea* is a conventional seiner fishing vessel with house and engine room forward, and may also be configured for shrimping, crabbing, trawling, long lining and tendering. The steel-hull single-chine hulls are designed with integrated bulbous bows. The vessel is equipped with two large fish holds and a bait hold aft, with fuel carried in wing tanks. The mess, galley and crew accommodations are located forward on the main deck, with a simple day-berth or enclosed Captain's stateroom aft of the wheelhouse. Many options are available for the main propulsion engines, reduction gears and generators.

Crowley's engineering services team delivers a full range of marine and engineering solutions. This includes detail and conceptual design, shipyard management, and on-site consulting services for all types of marine projects anywhere in the world. Our vessel design and marine engineering services are both extraordinary and cost effective. No matter the size and scope of your marine project, our professionals will help you achieve your objectives in the safest and most efficient manner possible.



Vessel Specifications

Overall Dimensions

Length Overall	57'-11"	Fuel Capacity (Approx)	7,994 gal
Length on Waterline	53'-4 3/4"	Fresh Water Capacity (Approx)	1,585 gal
Beam at Deck	23'-0"	Cargo Hold Volume	2,437 cubic feet
Draft to Deck	10'-6"	Shaft Horsepower	500 HP
Draft to DWL	10'-0"	Berthing	8

206.332.8090

crowley.com/vesseldesign

Seattle, WA • Jacksonville, FL

CROWLEY[®]
People Who Know[®]