



FVS-05825

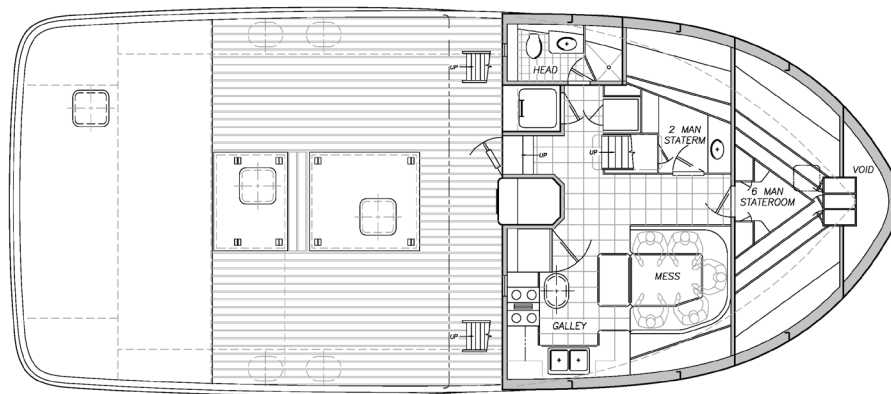
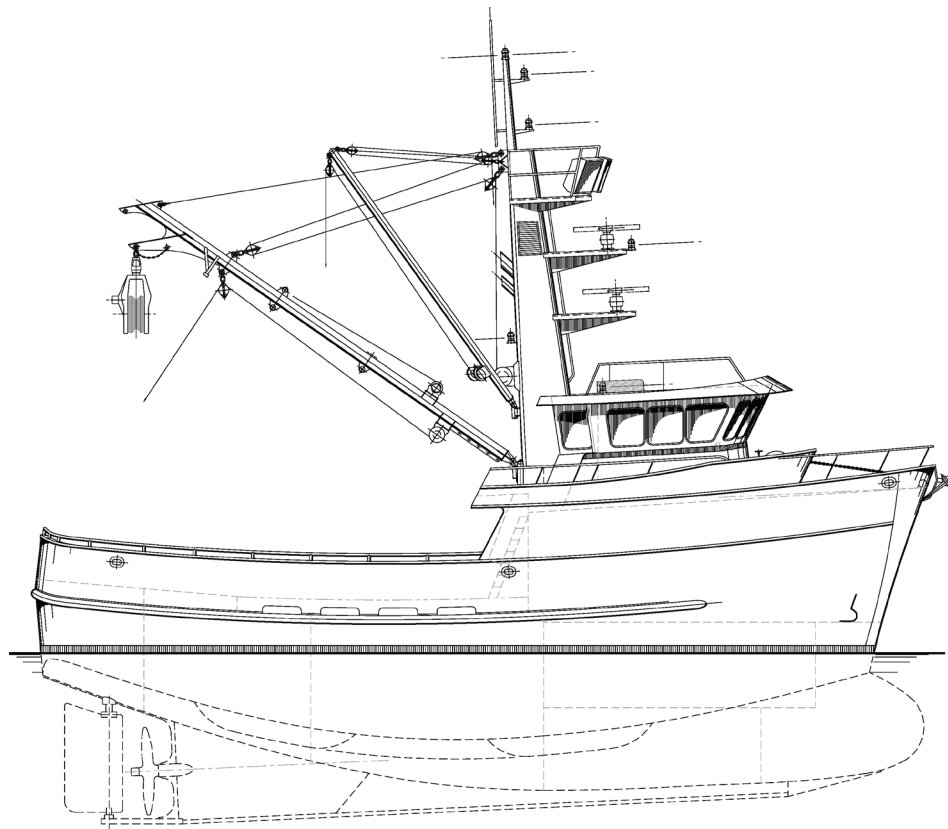
58' Fishing Seiner

The *F/V Shelter Cove* is a conventional seiner fishing vessel with house and engine room forward, and may also be configured for shrimping, crabbing, trawling, long lining and tendering. The steel-hull single-chine hull is designed with an integrated bulbous bow. The vessel is equipped with two large fish holds, with fuel carried in wing tanks. The mess, galley and crew accommodations are located forward on the main deck, with a simple day-berth or enclosed Captain's stateroom aft of the wheelhouse. Many options are available for the main propulsion engines, reduction gears and generators.

206.332.8090

crowley.com/vesseldesign

Seattle, WA • Jacksonville, FL



Vessel Specifications

Overall Dimensions

Length	57'-11" (17.7 m)	Hold Capacity	3,308 ft ³ (93.7 m ³)
Breadth	25'-0" (7.6 m)	Fuel Capacity	9,001 gal (34.1 m ³)
Depth	11'-3" (3.4 m)	Fresh Water	1,877 gal (7.1 m ³)
Propulsion	Single Screw, Fixed Pitch	Berths	8
Propulsion Power	563 HP (420 KW)	Gross Tonnage	106 US

206.332.8090

crowley.com/vesseldesign

Seattle, WA • Jacksonville, FL

CROWLEY[®]
People Who Know[®]