



THS-08240E

82' x 40' eTug Ship Assist Tug

At 82-feet long, eWolf utilizes a large, modular battery system coupled with power saving technology to conduct ship assist and escort operations with full performance capabilities – and zero carbon emissions.

With no exhaust stacks, the tug has 360 degrees of visibility from the pilot station. The Crowley-designed tugboat produces a rated 70-ton bollard pull with 4200kW of power. Over the first 10 years in operation, eWolf is expected to reduce: 178 tons of nitrogen oxide (NOx), 2.5 tons of diesel particulate matter, and 3,100 metric tons of carbon dioxide (CO₂) – the equivalent of removing 350,000 gallons of gas from use, according to EPA calculations.

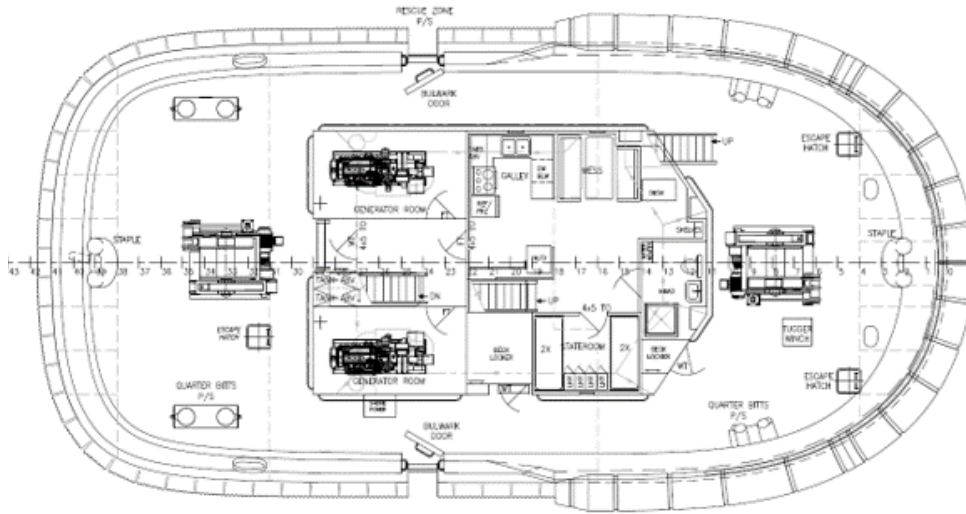
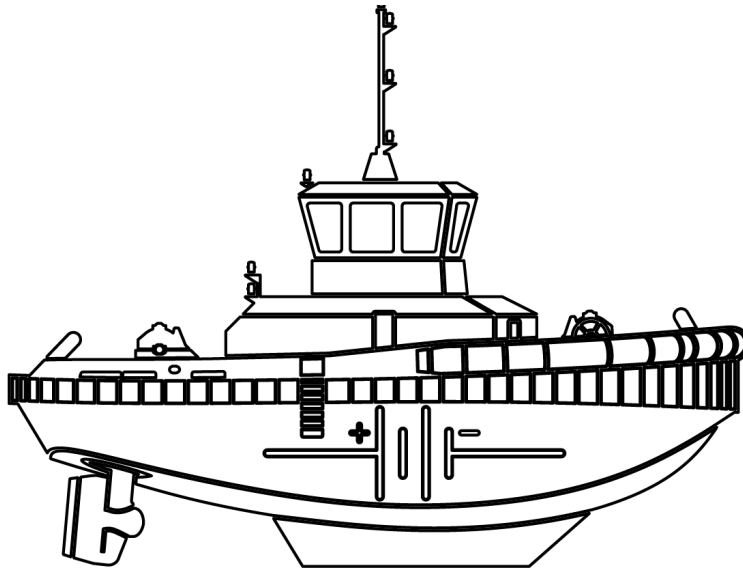
Overall Dimensions

Length Molded	82'
Length at Waterline	78' 4"
Depth	17' 9"
Design Draft	16' 5"
Beam	40'
Bollard Pull	70 short-tons (estimated)
Speed	12 knots
Gross Tonnage (US)	<200 GRT
Fuel	9800 gal@95%
Fresh Water	750 gal
Berths	4

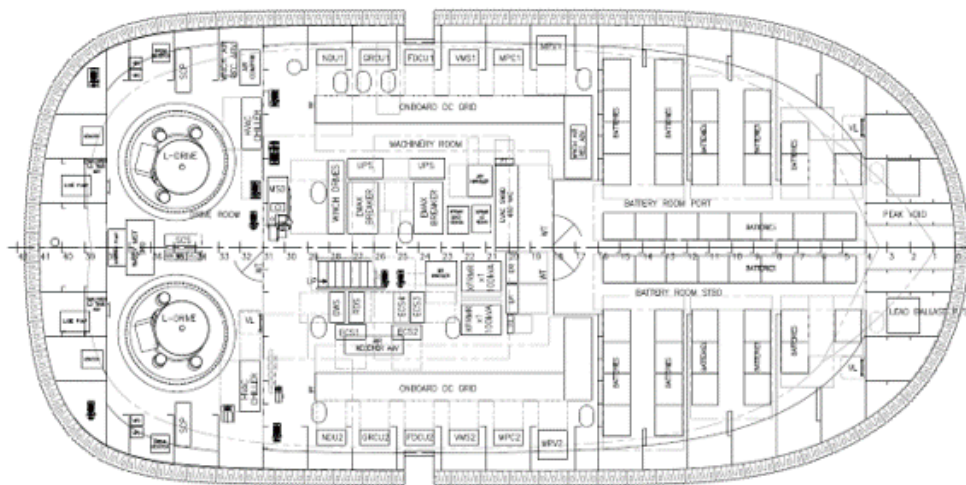
Bow & Stern Winch	Markey Model DEPC-48-50HP Electric Render/Recover Winch
Generators for Long Transit	2 x 300 kW
Battery Room Fixed Fire Suppression	Water Mist

Providing the Following

Main Propulsion Battery	6.2 MWh
Thrusters	2x Azimuthing Thruster
Electric Motors	2 x 2100 kW Motors
Switchboards	DC Grid & AC Switchboard
Intelligent Maneuvering	Marine Pilot Control
Autonomous Operations	Pilot Vision



MAIN DECK / DECKHOUSE
SCALE: 3/16"=1'-0"



HOLD PLAN
SCALE: 3/16"=1'-0"